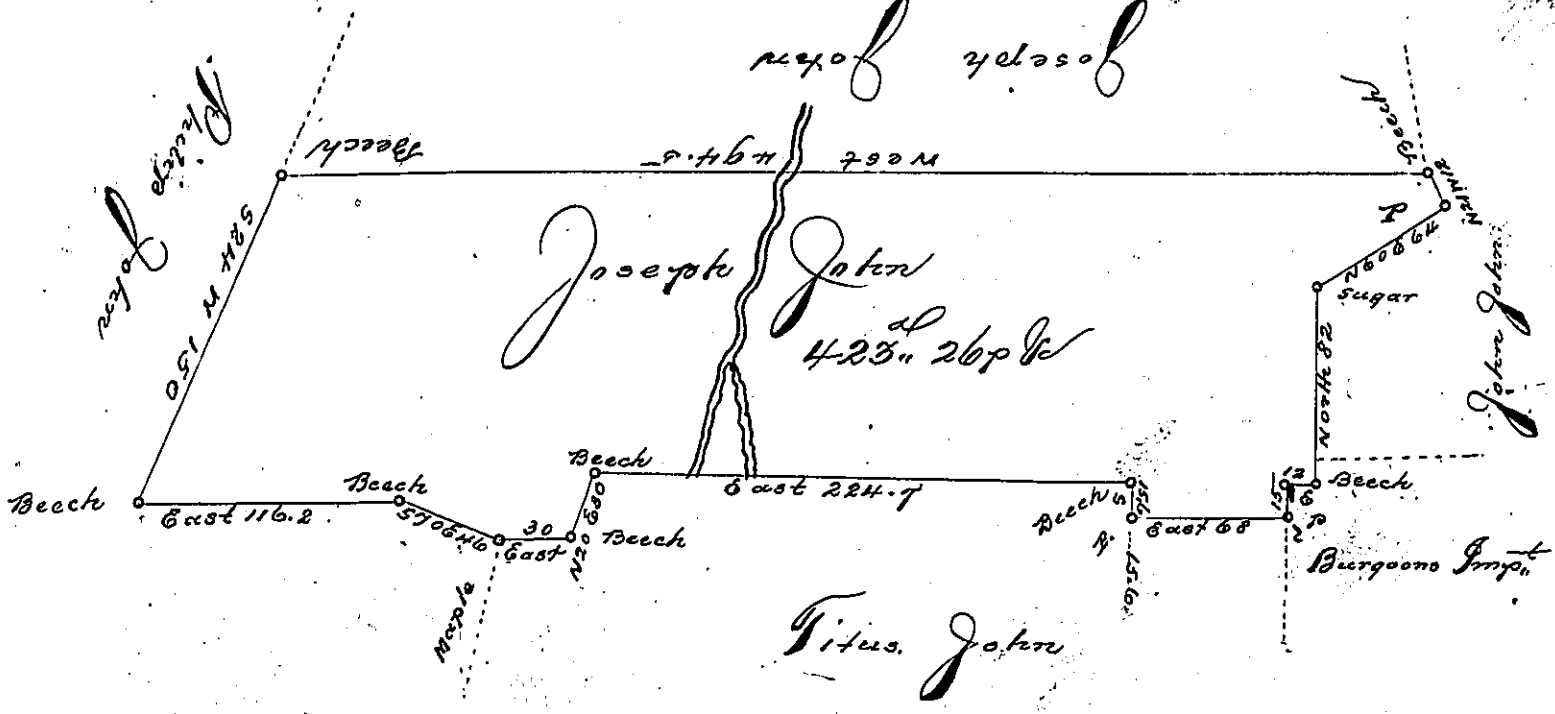


N. 57. 104

Joseph John



Titus John

Situate on the head Waters of Conemough, formerly Bedford next Somerset
 and now Cambria County Summerhill Topi. Containing ^{423' 26' 8} 423' 26' 8
 of 6 p. 10. 8c. Surveyed in 1794 in pursuance of a Warrant granted to Joseph
 John, dated March 12th, 1794, and Re-surveyed and examined the 3rd
 day of September 1830

by
 Wm. O'Keefe d. J.

Jacob Spangler Esqr.
 Surveyor Genl.

IN TESTIMONY that the above is a copy of the original remaining on file in
 the Department of Internal Affairs of Pennsylvania, made
 conformably to an Act of Assembly approved the 16th day of
 February 1833, I have hereunto set my Hand and caused
 the Seal of said Department to be affixed at Harrisburg,
 this 5th day of September 1899.

James W. Patta
 Secretary of Internal Affairs.

